



~Tails & Trails~

JULY 2010



From the President's Saddlebag

Howdy,

The June meeting was opened by Al and I will have to read the minutes to see if I still have a job.

As you can see from the calendar, **July is WIDE OPEN** for any rides anyone would like to trail boss. Just need to know the Date: Time: Location: Description of the ride: What to bring. Send the info to Debbie at dsamovar@hughes.net and she'll send out a broadcast email.

The Kimballs will also be doing weed spraying projects during the month on weekdays. So give them a call at 209-772-2434 to let them know what days you can help out.

So let us know where you want to ride and let's saddle up! ~ Bob



ANNUAL BBQ & POT LUCK Wednesday, JULY 21st 6:30 P.M.



The July Regular Meeting will be our Annual BBQ & Pot Luck, held at the park next to Dalton Gardens City Hall. The grill will be fired up, so bring your own meat to BBQ and a side dish. Bring your own beverage and cooking/eating utensils and dishes. Starts at 6:30, with a short meeting between dinner and desert. Hope to see you there.

Red Ives Work Project

August 6th-8th

This is a great work party to go on. Not only is it a chance to see beautiful country and have fun around the campfire, the club can make up to \$800 for clearing some trails. This is another project we have contracted with the Forest Service to do. We do need some extra help. We have enough pack animals; we just need riders that can help with chainsaw cutting and clearing brush. This is sometimes more difficult terrain to ride on and we will be crossing the St. Joe River several times.

Camping will be at the Red Ives Ranger Station across the river by the old barn and horse pasture. Friday night bring some hamburger. We'll have the trimmings. Saturday morning breakfast will be on your own, we need to get an early start for this is our work day. Saturday night will be a potluck and do your own meat; we'll have the grill on. Do your own lunch for on the trail. Sunday morning Kimballs will do breakfast and then we'll go for a day ride. We are thinking about staying a couple of extra days to ride more trails. We will get back to you on this.

If you can make this work party contact me as soon as possible. Karen Kimball 772-2434 or jandkimball@roadrunner.com.

DIRECTIONS: Red Ives is on the upper part of the St Joe River above the town of Avery. A sure fire way to get there is take I-90 to the Hwy 3/Rose Lake exit #34, go south to St Maries. At about 22 miles there is a stop sign/light at the Hwy 3/Hwy 97 Harrison "Y". From there go about 10.25 miles, at the 35 Miles speed sign and Avery/Caulder sign, take a left onto St Joe River Road (NF-50). It's about 90 miles from St Maries to Red Ives all on paved roads. Approximately at the 73 mile marker there's a bridge on the right to Red Ives that crosses Gold Creek. Look for one of our red and white PBCH arrow signs. The last 10 miles is paved, but narrow with few turnouts, so take it slow and carefully. Again, look for one of our red and white PBCH arrow signs at the Red Ives Historic Ranger Station directing you across the bridge to the camping area.



Photos from 2009 Work Party



PANHANDLE BACK COUNTRY HORSEMEN GENERAL MEETING JUNE 16, 2010 MINUTES

Vice President Al Linscott called the meeting to order at 7:35pm.

No new members or guests present.

May Minutes were read and corrected. Marilyn Rousher motioned to accept the corrected minutes, 2nd by Jerry Shriner, motion passed.

There was discussion regarding Brand Inspections and the type of documentation and information that's required. Al Linscott reported that Yellowstone County, MT is quarantined for all animals going in or out due to rabies in skunks that are coming out of the park. Jerry Shriner said that there have been three cases of Equine Infectious Anemia in Gallatin County, MT, so they are requiring current Coggins tests. Karen Kimball said that rabies shots are available for horses which are good for 2 years, dog rabies are good for 3 years and human are good for 2 years.

4TH OF JULY WORK PROJECT - Karen Kimball reported that we had 25-30 people in all show up. Thanks to Gene Bruce and Bob Funke for welding the hitching posts and horse gates. Gene brought his tractor which made for fast clearing and digging post holes. Lots of pictures were taken and Bea Christopherson will get the names of the folks from the Nordic Club.

LOST CREEK WORK PROJECT - Karen Kimball will be bringing hamburger for the Friday night pot luck.

2011 STATE CONVENTION - Karen Kimball has talked to the CDA Inn and they will match the casinos pricing. She has the contract and if it's OK she'll sign it. Karen Kimball made a motion that we go with the CDA Inn, Linda Funke 2nd, motion passes.

STEAK RIDE - Al Linscott reported that the ride will be open to members and their guests and will be on Sept 25th. The price will be \$10/person which will need to be paid in advance when you RSVP. April Linscott is the trail boss and she is still hammering out the details for the location between Canfield and Liberty Lake. If Liberty Lake, your horse will need to have a Coggins test/Health certificate to go into the state.

CALENDARS - Debbie Samovar reported that there are 4 left and as we've paid for them we should send in the postcards for the raffles under the club name. Everyone was in agreement.

STATE BOARD OF DIRECTORS MEETING - July 10th.

Karen Kimball reported that there were 2 proposals to be voted on. Treasure Valley proposed that the chapters only pay \$18 per calendar as we get 20% back and also to have a longer time to get the money to the state. General discussion was that we are in agreement. Heartland proposed that 25% of the calendar sales go back to the chapters and vote on the % returned to the chapters each year. General discussion was that we are not in agreement. Diana Shriner made a motion that we let Karen Kimball and Marilyn Rousher use their own discretion after hearing full discussion on how to vote on these issues, with the exception that we as a club are opposed to the motion the 25% or anything above the present amount be returned to or retained by the clubs. Jerry Shriner 2nd, motion passed. Motion passed. Marilyn Rousher received an e-mail with a schedule of which chapters will be hosting the State Convention thru 2024, alternating between north and south chapters, which will be voted.

NORTH IDAHO FAIR & RODEO - We have had an ad in the Open Horse Show Entry Guide and do we want to do it again and we can update the info. Cost is \$100 and it is good advertising. Karen Kimball made a motion that we do the ad again, Les Erickson 2nd, motion passed.

We received a letter from the ID Dept of Parks & Recs regarding their budget and it will be put into newsletter.

JULY RIDES - We are wide open for rides this month. If you have any ride you want to lead, contact Bob. Also we will be doing weed spraying and need people to help. These will be done during the week. Contact Jim and Karen Kimball if you can help.

We received a Thank You card from Gary and Vanessa Edwards for buying the 2nd St Joe Transporter - Karen Kimball talked to Vanessa Edwards regarding how the transported worked at the 4th of July Work Project. It didn't fit Jerry's Dekker very well, but fits Karen's OK. So for the time being we will leave it as is and maybe make modifications later on.

13 members were present. Ken Beamer's name was drawn for the \$128 Progressive Pot and will carry over to July.

Meeting adjourned at 8:36

Respectfully Submitted, Deborah Samovar, Secretary

*Panhandle
Back Country
Horsemen
Sending their
Thoughts for
you to
get well soon*

Tom and Ann Johnston's son was injured in a car accident a while back and has been in the hospital in Spokane for some time. He had a broken neck and most of his body was paralyzed. He is getting some feeling back but has a long recovery ahead. Tom and Ann hope to have him home soon.



*Panhandle Back Country Horsemen
Extends their Deepest Sympathies to
Gary and Vanessa Edwards
On the loss of Gary's brother, Kenneth.
Our Thoughts are with You.*



2010 EVENTS



► PBCH Events ► **Regular Meeting** ► **TRAIL BOSS NEEDED** ► **RSVP** ► Non-PBCH Events



JULY

RIDES WANTED

Contact

Bob Williams: 509-244-9447 or leawilliams65@yahoo.com

Deborah Samovar: dsamovar@hughes.net

Weed Spraying

Weekdays

Karen Kimball, Trail Boss

208-772-2434 or

jandkkimball@roadrunner.com

10th – Saturday

BCHI State Directors Meeting 9:00 – 7:00

Host by PRVBCH at Pee Wee Creek

<http://www.bchi.org/documents/2010-July-BODmtg.pdf>

17th – Saturday

PRVBCH Competitive Trail Challenge

Pee Wee Creek Trailhead

Dottie Yerkes 208-263-4655



21st – Wednesday

Regular Meeting – Open to Public

ANNUAL POT LUCK

6:30 in the Park

AUGUST

7th & 8th – Saturday & Sunday

St Joe Work Project at Red Ives

Karen Kimball, Trail Boss

Please **RSVP** to 208-772-2434 or

jandkkimball@roadrunner.com



18th – Wednesday

Regular Meeting – Open to Public

SEPTEMBER

18th – Saturday

Regular Meeting – Open to Public

25th – Saturday

Steak Ride – Location TBD

April Linscott, Trail Boss

Please **RSVP** to 208-660-1415 or

linscotta@gmail.com

Members & Guests \$10.00 – PrePaid

OCTOBER

16th – Saturday

Regular Meeting – Open to Public

NOVEMBER

20th – Saturday

Regular Meeting – Open to Public

DECEMBER

4th – Saturday

Christmas Party

Avondale Country Club

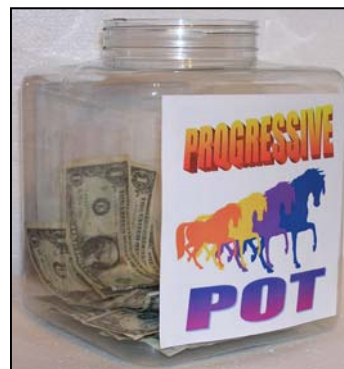
10745 Avondale Loop Rd, Hayden Lake, ID

TRAIL BOSS NEEDED



\$ \$ PROGRESSIVE \$ \$

\$ \$ POT \$ \$



Ken Beamer

was the name drawn

for the June

Progressive Pot of

\$128

which will
carry over to
JULY.



Member Marilyn Rouser won the High Point Mustang Division at the Trail Challenge at Mustang Days on the 27th. She rode her ageing mustang Buddy and had the 4 highest points of everyone in every division. You go girl. Congratulations!

National Trails Day

4th of July Pass Work Project

Several members from PBCH and five members of the Panhandle Nordic Ski and Snowshoe Club showed up at the 4th of July Recreation Area east of Coeur d'Alene on Saturday, June 5, in recognition of National Trails Day.

Members showed up from 8 to 10 a.m. to work on different aspects of the work day. Three groups worked on clearing trails and putting in two hitching rails and two horse gates as the weather stayed dry and overcast. Gene Bruce and Bob Funke welded the hitching rails together and added three horseshoes to each rail. These were painted black and put in the ground with cement. Gene Bruce hauled his tractor up which really made short work on the hitching rails and horse gate installations. The club installed these trailhead improvements at the main trailhead parking lot and up Road 614 at trailhead 1575. Several members including Brad Porter, Al Linscott,



*Panhandle Nordic Ski and Snowshoe Club
L to R: Geoff Harvey, Glenn Truscott,
Bob Conquergood, & Joe Deet
with Tim Garb shielded behind Bob.*



*L to R: Gene Bruce, Karen Kimball,
Angela Parsons, Al Linscott and
Wayne Parson discussing the plan of
attach at road #164*



New Hitching Rail on road #164

Karen Kimball, Bill Clarke and Dave Rousher helped with this work party. In addition Angela and Wayne Parsons and Marilyn Rousher assisted with this work party.

A second group of workers, Bill and Linda Funke and Jill Reineccius started down the Snowshoe Trail on horseback and worked clearing trees and brush from that trail with chainsaw and loppers. A third group of workers on horseback including Jerry Shriner, Bea Christopherson and Kay Bradley started off Road 614 and worked the 10-mile trail loop with chainsaw and loppers. Jerry tried out the club's new St. Joe transporter pack saddle.

The other PBCH members Deborah Samovar, Joni Lueck, and Terry and Dee Sverdsten helped prepare and serve food. Many people contributed with pot luck items and the club furnished chili, cornbread, honey butter and coffee. Some of the potluck items included strawberry rhubarb pie, huckleberry muffins, grapes, green salad, garlic bread, hot dogs and a cinnamon bundt cake!

Geoff Harvey, Glenn Truscott, Bob Conquergood, Joe Deet and Tim Garb of the Panhandle Nordic Ski and Snowshoe Club were able to open US Forest Service gates along the trail for ease of work and access of equipment and



*Bob Funke, Linda Funke and
Jill Reineccius returning from the
Snowshoe Trail with
Joni Lueck opening the gate.*



*Brad Porter and David Rousher
working on the post holes
with Gene Bruce on his tractor.*



New Horse Gate on rode #164



*Marilyn Rousher and
Karen Kimball talking about
photos to take.*



*The #164 Road Gang
Bea Christopherson,
Kay Bradley
and Jerry Shriner
with our new
St Joe Transporter.*



*Terry and Dee Sverdsten
manning the Fire Grill.*



Joni Lueck and Debbie Samovar working the food..



*Bea Christopherson with
Glenn Truscott and Geoff Harvey
and
Joe Deet of the Nordic Club*



*Al Linscott and Brad Porter
cementing the New Hitching Rail at
the 4th of July Pass Trail Head
Staging Area.*



The New Horse Gate

riders. They also cleared some trail with chainsaws and hand tools. The ski club maintains the trail system year around for skiers, hikers, stockmen and bicyclists in this non-motorized area. Ski club member Skip Truscott said "It's fun to come out and work with PBCH and it brings more eyes out here and keeps vandalism down". Their club started organizing in 1985 to maintain the trail system as the Forest Service didn't have much of a budget, he added.

There were no mishaps and everyone came back unhurt. Lots of people had cameras so there will probably be a lot of photos at the Christmas party!

Additionally, PBCH will be applying for Litehouse grant money at the annual BCHI Foundation meeting this November. Money is available each year to the eligible five northern Idaho BCH clubs to improve trailheads for stock users.

Thanks to all the people in the background who helped make this Trails Day activity a success, Karen Kimball, RSVP Coordinator, Joni Lueck and Bea Christopherson, Trail Bosses.

~ Joni Lueck, Trail Boss



The gang enjoying the feast.



*Wayne Parson & Bill Clarke
working on post holes.*

Lost Creek Work Project

We had good weather Friday night and Saturday for the work on Lost Creek. Jim and Karen Kimble, Jerry Shriner, Jill Reineccius, Bob and Linda Funk and I cut out between 30 and 40 trees and did some pulaski work on three small pieces of tread.

In reality, Bob and Linda Funk and I did all but 2 trees and rode the shortest leg of the trail. Three miles felt like ten. We reached the junction about 2:00 PM. The Kimble's, Jerry and Jill crew had been there since noon. After lunch and a short ride toward the state line, we turned down the five mile leg which in reality had been cut out before we got there.

This is a good trail and grade to the state line and open enough to get some good views of the land around the area. The short leg is steep mostly, no view and has a bad bog in the bottom

Angela and Wayne Parson got to the trail head about half an hour after we had left and missed a hill climb but used the time waiting for our return cleaning up garbage along the road near the trail head. Diane Shriner came in about breakfast time. With the rain coming in no one rode again on Sunday.

Great food, great fun around the fire and all in all a great outing and good weather.
~ Bob Williams, Trail Boss

Seven show up for the clearing and then 3 more came and joined us later. 3 Parties got lost on the road. Half the loop trail had been cleared the other half was steep with lots of logs. Bob & Linda Funke and Bob Williams got that half.

Had a fun time around the camp fire with chocolate, etc. Weather was great and trail was real nice and beautiful views. Hope more people can join us on the next outing and see what fun we have. ~ Karen Kimball, Co-Trail Boss



Bob W. & Bob F. moving log off trail.



Bob Funke cutting one of the many trees.



Bob Williams doing pulaski on trail tread.



Jerry Shriner sawing a downed tree.



Bob Williams, Jim Kimball, Bob Funke and Karen Kimball taking lunch at the junction.



Bob & Linda Funke with Bob Williams bringing up the rear.



Bob Williams lashing on an empty water jug left by previous trail users.



The gang on the trail. That's Jill Reineccius in the red shirt between the trees.



Jim & Karen Kimball with Jerry Shriner at the rear.

Idaho Logging Safety News

Volume 20 Number 2
June, 2010



Idaho Logging Safety News

LOGGING AROUND TICKS

By Terry Streeter

I got a call a few weeks ago asking about TICKS. The logger reported that they were already bad. After asking around a little bit, other loggers said they were seeing ticks everywhere, so I did some research.

Information from the Canadian Lyme Disease Foundation says ticks carry many diseases, two being Lyme Disease and Rocky Mountain Fever. "Tick Paralysis" is also a possibility, which affects a person with a slow paralysis over a couple of days and can cause death if the attached tick is not found.

Apparently, individuals will recover within hours once the tick is found and removed.

Diseases are less likely to occur if the tick is removed within 24 hours of attachment. For this reason daily checks for ticks and prompt removal of any attached ticks will help prevent infection.



How to remove a wood tick! DO NOT use petroleum jelly, a hot match or nail polish. Attempting to remove the tick using these methods could be dangerous by making the tick vomit, which increases the possibility of infection or disease. Use tweezers to grab the tick as close to the skin as possible and gently pull upward. Never twist the tick as you pull or yank it quickly, as you can leave the mouth parts still lingering in the bite site. Wash the area with warm water and soap and apply antiseptic.

If you are in areas where ticks are present, you can protect yourself by wearing light colored clothing so that ticks can be spotted easier and removed before becoming attached. Tight collars and wearing long sleeved shirts with tape or bands at the cuffs and bottoms of the pant legs may provide additional protection. Repellents containing "Deet" applied to clothes and exposed skin can also be used.

Ticks can make you sick and even prove to be deadly so take them seriously. We used to believe that there was a heavier infiltration of ticks after milder winters, but apparently that is not so. Ticks are simply nasty creatures!



2010 WINNERS

January – Dannale Anderson, Cataldo, ID • February – D.M. Wiggins, Eagle ID
March – Lisa Swanson, Lewiston ID • April – Mike Karlin, Lewiston, ID
May – Jim Freeman, Nez Perce, ID • June –
July – • August –
September – • October –
November – • December –



Priest River Valley Backcountry Horseman

P.O. Box 498, Newport, WA 99156 www.prvbch.com

BCHI BOARD OF DIRECTORS MEETING

Hosted by Priest River Valley BCH
July 10, 2010 9:00—7:00

The Priest River Valley chapter wants to welcome everyone who is able to travel North for this meeting. We hope folks might stay awhile to enjoy the Panhandle region of Idaho.

For those who want a true camping and/or riding experience here is a description of the Pee Wee Trailhead, the site of the meeting. The trailhead has highline posts, lots of room for big rigs, stock water (no people water) and a new CXT toilet. If anyone wants to camp but can't bring all the camping equipment, our chapter members will provide wall tents, heaters and cots. Chapter members can have these set up in advance (hunting camp style) so anyone who would like a wall tent should contact Dale Schrempp, Chapter President at #208-448-1255.

For actual trail information our PRV chapter website has links to the Priest Lake Ranger District website and trails inventory.

Also, two PRV chapter members who live close to the trailhead can provide an RV spot at their homes (water and electric). One place is approximately 4 miles from the trailhead and can provide room/pasture for riding stock and at least three rooms available in the house if anyone wants to stay indoors. Call Dale at #208-448-1255.

The Eagles Nest Motel is the only motel in the town of Priest River (ph #208-448-2000) if anyone chooses that option. Otherwise, there are a number of resorts on Priest Lake that offer rooms and cabins. Those accommodations would be approximately 25 miles from the trailhead. A few of them are "Elkins Resort", "Hills Resort", "Grandview Resort" "Blue Diamond Marina". All these have websites and could be reached online. There is also a number of "Bed and Breakfast" places in the area and if anyone wants more information regarding these, they could contact me or search online.

A few PRV chapter members have offered their riding stock if anyone wants to ride some of the trails but can't bring stock. If interested call Dale at #208-448-1255.

Directions to the Pee Wee Trailhead and meeting location: Take State Highway 57 North from Priest River (it's the only traffic light in town) go 3.5 miles to Peninsula Road, turn right on Peninsula road and proceed 4.5 miles to Forest Road #334 (Gleason-McAbee road) turn left on #334 and proceed 1 mile to Trailhead on the left, just past the gravel pit. If you use Google earth or other mapping programs the trailhead is located in Section 18, T57N, R4W, B.M

The PRV chapter is planning an evening campfire program at the trailhead on Saturday night and we are providing continental breakfast on Saturday and Sunday, a dinner on Saturday night and "sack lunches". More on that later.

**Priest River Valley
Backcountry Horseman
COMPETITIVE TRAIL RIDE
PEE WEE CREEK TRAILHEAD, IDAHO
JULY 17, 2010**



Come and ride the trails with panoramic views of Priest River Valley.

Trail is well groomed with mostly natural trail obstacles. There are small bridges to cross. This will be a 3-hour ride **This is NOT a RACE**; it's a pleasure ride.

SIGN UP will be at 8:30 am until 11:00 am

Riders meeting at 9:30

First rider out at 10:00 am

Cost \$15.00

Ages 17 & under and 18 & over

Prizes 1st thru 3rd in each age group

Over night camping is available for free, no hook ups

Directions: Take Hwy 57 North out of Priest River, go 3.5 miles to Peninsula Rd. Turn right, go across bridge, proceed 4.5 miles, turn left onto gravel Forest Road #334 (Gleason-McAbee Falls Rd) proceed 1 mile. Trailhead is on the left just past the old gravel pit.

FOR MORE INFORMATION

**Call Dottie: 208-263-4655
Or Call Dale: 208-448-1255**

Requirements:

Horses should be shod.

No running horses.

No stud horses or dogs on trail.

No alcohol on trail.

Dogs must be on leashes at all times.

Riders must wear boots.

Riders must carry a halter and lead rope on the trail ride.

Release forms will be signed.

Under 18 require parental Release.

Under 14 to be accompanied by an adult.

No horses left unattended while you ride.

Judging will be accomplished in several areas throughout the course with heavy emphasis on natural trails, obstacles, manners & condition of the horse or mule.

MANDATORY EQUIPMENT

will consist of boots, saddle, bridle or hackamore, halter and tie rope. You should however, carry any item you might need on a long trail ride. The condition and cleanliness of your equipment will be considered.



C. L. "Butch" Otter
governor

Nancy C. Merrill
director

David M. Ricks
deputy director

.....
**IDAHO PARK AND
RECREATION BOARD**
.....

Steve Klatt
region one

Randal F. Rice
region two

Ernest J. Lombard
region three

Latham Williams
region four

Jean S. McDevitt
region five

Douglas A. Hancey
region six

.....
**IDAHO DEPARTMENT OF
PARKS AND RECREATION**
.....

north region service center
2885 kathleen avenue- suite #1
coeur d'alene, idaho 83815

(208)769-1511

fax (208)769-1418

www.parksand recreation.idaho.gov

PANHANDLE BOARD MEMBER'S REPORT
IDAHO DEPARTMENT OF PARKS & RECREATION
May 21, 2010

Springtime Greetings for Some Outdoor Recreation:

I have just enjoyed the springtime scenery of northern Idaho on a drive to Orofino for our Spring Board Meeting and the cool, wet spring weather has our hills glistening with emerging green beauty. We all owe it to ourselves to take a little time and enjoy the by-product of those irksome cool, wet, windy days we've had and get some healthy exercise along with some outdoor fun. This country we live in doesn't get much prettier than it is right now, although the nicest days seem to be the ones scheduled for work - most peculiar!

Well, IDPR survived the cuts and bruises of a tough legislative session and we're committed to keeping all the parks open in the system. Now, we're adjusting political perspective to operational reality and trying to stretch a thinner workforce across the same duties without setting up a high quality staff for eventual failure by asking them to perform the impossible. Park users and the business community around our parks should make an effort to acknowledge the first-rate yeoman's response being made in a cheerful manner by our park staff and the volunteers working in every park in the state of Idaho.

One of the pleasures of the Spring Meeting is the awarding of our recreational grants. North Idaho did well across the slate of grant programs, even though the extended region around Boise was the biggest recipient of grant funds. Even though our grant funding was not impacted by the financial downturns of the state budget, there was a significant reduction in the number of applications we received. So, every application had a better chance of being funded than in our normal competitive process. The Governor signed the bill extending for another year the proposed end of recreational fuel tax funding formulas, but keep in mind the grant funding for most programs is slated to end next July. There is a legislative task force working on finding a better method of funding highway improvements and hopefully, leaving our funding intact as is.

Beginning to formulate our budget for the year beginning July, 2011 was a topic of discussion at the meeting and will be finalized at the summer meeting. Even before we implement the budget recently approved by the legislature, we attempt to foresee the spending and operational needs for IDPR in the year following. Trying to prognosticate our income via increased fees and rising visitations cannot blindly ignore the vagaries of our sometimes temperamental weather and the effects of wet weather on outdoor recreation.

There is an interesting funding proposal for the park system beginning to circulate among some legislators and finding traction among park supporters. Adding a park funding component to license plate fees has been incorporated by both Montana and Washington, at the same time removing park entry fees for residents. At the Governor's request, IDPR is preparing individual business plans for each park and determinedly looking for new and innovative sources of revenue to generate funding to help bridge the challenges of this economy. One thing we keep in mind in all discussions of increased fees is never raising the price of our products to a level where people stay away from our parks because of the price becomes unattractive.

Should circumstances develop whereby I am not re-appointed to the Parks Board this summer, I want you all to know the past six years representing the Panhandle have been both a privilege and a pleasure.

Get outside for some recreation - the Panhandle is mighty pretty right now.

Steve Klatt

IDPR Board, Region One



AMERICAN HORSE COUNCIL
Your Unified Voice In Washington

American Horse Council Press Release

July 1, 2010

FOR MORE INFORMATION

Contact: Bridget Harrison

202-296-4031

bharrison@horsecouncil.org

American Horse Council Highlights Recreational Riding

On Tuesday June 22, the American Horse Council (AHC) held its first Recreation Forum in Washington, DC to highlight issues of importance to recreational riders. The forum was attended by representatives from national equestrian organizations, state horse council's from around the country, as well as individual recreational riders.

The forum began with a presentation by Stephanie McCommon of the American Quarter Horse Association (AQHA). McCommon, briefed attendees on AQHA's Stewards for Trails, Education and Partnerships (STEP) program which seeks to "increase participation in trail stewardship among equine enthusiasts." The forum continued with a presentation by **Dennis Dailey of Backcountry Horsemen of America (BCHA)**. Dailey spoke on the U.S. Forest Service's Trail Classification System and its impact on equestrians in National Forests.

The forum also included two enlightening panel discussions. The first panel focused on the benefits of equestrians building better partnerships with other traditional recreational users and conservationists. The panel featured Kim Hutson de Belle of the American Hiking Society (AHS) and Anne Merwin of the Wilderness Society (TWS) as well as Dennis Dailey, BCHA. The panel discussed many important issues including declining numbers of Americans recreating in the outdoors and its impact on conservation, the need to link public and private lands with trail easements, and the challenges equestrians, hiking and conservation groups face when working together.

"The equestrian, hiking and conservation community have many shared interest. I believe Tuesday's discussion demonstrated that these shared interest are being recognized and great progress is being made in efforts to work together," said Ben Pendergrass Legislative Director of the AHC.

The second panel focused on building better relationships between equestrians and federal land managers. The panel included Rick Potts, Chief, Conservation and Outdoor Recreation Division, National Park Service (NPS), Bob Ratcliffe, Division Chief, Recreation and Visitor Services, Bureau of Land Management (BLM) and Jonathan Stephens Program Manager, Congressionally Designated Areas and Trails, National Forest Service (FS). Topics included the need for equestrians to build relationships with their local federal land managers before problems arise, the backlog of trails and facility maintenance, the Presidents America's Great Outdoors Initiative, and efforts to preserve traditional recreational uses.

The forum wrapped up with Ginny Grulke of the Kentucky State Horse Council discussing the challenges faced by trail riders in Kentucky on the state level and how they have been responding.

"Recreational riding is important to millions of Americans and these Americans rely on public lands and trails to ride. The AHC believes it was important to bring equestrians, leaders from NPS, FS, BLM, and AHS, TWS together in Washington to talk about recreational riding and our public lands," said AHC Legislative Director Ben Pendergrass. "We are very happy with the outcome of the Recreation Forum and believe it is a positive step in ensuring recreational riders continue to support and have access to our nation's public lands."

As the national association representing all segments of the horse industry in Washington, D.C., the American Horse Council works daily to represent equine interests and opportunities. Organized in 1969, the AHC promotes and protects the industry by communicating with Congress, federal agencies, the media and the industry on behalf of all horse related interests each and every day.

The AHC is member supported by individuals and organizations representing virtually every facet of the horse world from owners, breeders, veterinarians, farriers, breed registries and horsemen's associations to horse shows, race tracks, rodeos, commercial suppliers and state horse councils.

BOOK REVIEW

Horse Camping by George B. Hatley

This book is very easy to read and more so to understand. The illustrations, knots, equipment etc. are all very well done.

The Panhandle Back Country Horseman chapter has a long and successful history of horse camping, and packing timber and supplies for Forest Service trail work, with our own volunteers doing the work on trails.

The general feeling after reviewing this book is that it is a good addition to anyone's library who use horses to hunt, camp or spend weeks in the wilderness. Plus it is just plain good information for anyone who spends time with horse.

Bob Williams
Panhandle Back Country Horsemen.

TRAIL SENSE for a NEW GENERATION

Horse Camping [Revised Edition]

George B. Hatley

Photographs by Lewis Portnoy

Foreword by Juli S. Thorson

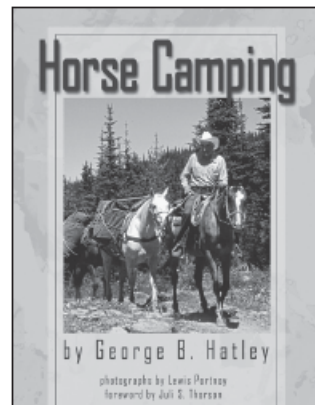
Idaho's consummate cattle rancher, trail guide, and Appaloosa Horse Club founder advises pack trip enthusiasts from his practical and uniquely sage perspective.

Paperback • ISBN 978-0-87422-303-3 • \$24.95

Washington State University Press titles are available
at bookstores, online at wsupress.wsu.edu,
or by phone at 800-354-7360

WSU PRESS

Fine Quality Books from the Pacific Northwest



SEE DEBBIE
TO CHECK OUT
THIS BOOK.

CLASSIFIED ADS

Tack Room Cleanup:

2 saddles good shape \$250 and \$300.

One set leather saddle bags
very good shape \$50.

Some pads and misc. stuff.

Gene Bruce 699-6426.

NOTICE

August Newsletter will go
out on the 14th

As I will be on vacation
July 24th – August 9th.



INTERESTED IN A JACKET WITH THE CLUB LOGO ON IT?

Get it at
Monogram Plus
1006 N 4th Street, CDA
208-667-3186

For \$35 they will embroider your jacket or you can
select one from their large inventory.
Pleas note, due to the thread count this logo can not
be put on nylon/satin or leather jackets.



Deborah Samovar Midnight Graphics

*Specializing in Newsletters, Business Materials
& Print Production*

9176 E Soaring Hawk Lane • Saint Maries, ID • 83861
208-245-3041 • dsamovar@hughes.net



Katie Bane, GRI, ABR®
REALTOR®
realestate@icehouse.net

**CENTURY 21
Beutler & Associates**
1836 Northwest Blvd.
Coeur d'Alene, Idaho 83814
Cell (208) 661-6753
Toll Free (800) 786-4555
Fax (208) 415-0801



Each Office Is Independently Owned And Operated

DAVE LOGUE
President

**Selkirk
Aviation
Inc.**

IONI LUECK
Vice-President

FAA Repair Station #LOGR640X

Specializing In Fiberglass Aircraft Parts

email: selkirkav@selkirk-aviation.com

www.selkirk-aviation.com

(208) 664-9589
Voice Mail 1-800-891-7687

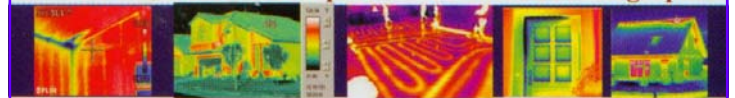
3805 Industrial Ave.
Coeur d'Alene, ID 83815



Griffinspect Home Inspections LLC
Full Service Home Inspections ~ Thermal Imaging

Teri Horton

Owner ~ Certified Inspector ~ Certified Thermographer



208-664-9775

212 Ironwood Dr. Suite D 245
Coeur d'Alene Idaho 83814

www.griffinspectllc.com
teri@griffinspectllc.com



Vanessa G. Edwards
208.582.0105

www.longearoutfitter.com

vanessa@longearoutfitter.com

The Ranch at Mica Meadows

Full Care Horse Boarding Facility

Stall, Paddock and Pasture Board
Indoor and Outdoor Arenas ~ Riding Trails

Six Miles South of Coeur d'Alene on Highway 95

Manager: Cece Hirschi
208/ 667-1311
208/ 699-6611

9530 S. Highway 95
Coeur d'Alene Id 83814



Krista Porter DVM
Veterinary Chiropractic

208.651.0973 • kporterdm@yahoo.com



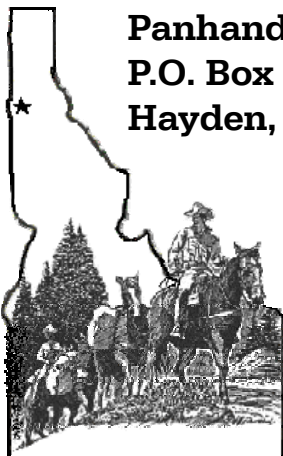
Idaho State Police

Julie Schwanz
Deputy Brand Inspector
Lewiston District
Idaho Brand Board

PO Box 605
St. Maries, ID 83681

Cell 208-582-0899

Website: www.isp.state.id.us/brands



Panhandle Back Country Horsemen
P.O. Box 1903
Hayden, ID 83835

Place
Stamp
Here

**Monthly meetings
are the 3rd**

WEDNESDAY

**For JULY, July &
August**

**Held in the Dalton
Gardens
City Hall.**

**Ya can
hitch yer
hoss at
6360 North Fourth St**



Place Label Here

Next meetin'....

**Wednesday
JULY
21st**

**Socializing - 7:00
Meeting - 7:30**

**Enjoy some friendly
conversation, hot coffee
and snacks.**

**Heck fire... you might even
win the Progressive Pot!**



**Sure
would
like to see
ya thar...**

**Ol' Festus &
the crew.**

JULY

RIDES WANTED

Contact

Bob Williams: 509-244-9447 or leawilliams65@yahoo.com
Deborah Samovar: dsamovar@hughes.net

Weed Spraying – Weekdays

Karen Kimball, Trail Boss: 208-772-2434 or jandkkimball@roadrunner.com

10th – Saturday

BCHI State Directors Meeting 9:00 – 7:00

Host by PRVBCH at Pee Wee Creek

<http://www.bchi.org/documents/2010-July-BODmtg.pdf>

17th – Saturday

PRVBCH Competitive Trail Challenge – Pee Wee Creek Trailhead
Dottie Yerkes 208-263-4655

21st – Wednesday

Regular Meeting – Open to Public – ANNUAL POT LUCK
6:30 in the Park

**Thanks to all of our
members for supporting
Panhandle Back
Country Horsemen.
We couldn't do it without
YOU!**

PANHANDLE BACK COUNTRY HORSEMEN CONTACTS

President:	Bob Williams	509-280-7796
Vice-President:	Al Linscott	208-682-4918
Treasure:	David Rousher	208-667-7452
Secretary:	Debbie Samovar	208-245-3041
Newsletter:	Debbie Samovar	dsamovar@hughes.net
Web Wrangler:	High Desert Design	hdd430@gmail.com
Web Site:	www.pbch.org	